



MONTHLY NEWS
FROM THE SHED

Update

Monash Men's Shed Inc. at Bogong Reserve,
1/49-77 Bogong Avenue, Glen Waverley, Victoria, Australia, 3150
Phone 9561 8557

OFFICE HOURS:
Monday to Saturday 9.30 to 1:30
For Public holidays, contact our office
on 9561 8557

firstnational
REAL ESTATE
Waverley City



August 2022

"MENTERTAINMENT" Meeting



The next open day for the shed is Wednesday 5th October. The event titled "MENTERTAINMENT" is a day of games, activities and giveaways in lieu of Seniors Week.. A meeting will be held 10.00am – 11.00am Thursday 11th August to discuss what can be done to make this a great day out for members of the community. **We are seeking input from members on what activities should be planned and how you can help the day be successful.** If you have any activities in mind, projects you would like to showcase or any ideas on how to make the day run smoothly, feel free to come along

Christmas Lunch Bookings

Bookings for the Christmas lunch on the 14th of December are now open! If you would like to secure your position at the event a \$5 deposit is required. The cost of the meal to members will be \$20, and if you would like to bring a friend, partner or family member the cost for them will be \$30. The dinner will be 2 delicious courses with drinks sold separately. Remember, **no walk ups are allowed so get your bookings in quick!**



Consumer Rights Talk



Do you know your rights as a consumer? Do you know that you are entitled to certain guarantees when you purchase goods or services? If you didn't then this month's talk may be for you. Consumer Affairs Victoria will be holding this Consumer Rights event in Bogong Hall on August the 17th.

Feel free to invite your friends and family to these talks, the information in these events is useful to all members of the community. At our last Health Event we were delighted with the turnout, and we are hoping for an even better turnout for Wednesday's presentation. See you there for an informative discussion and a \$2 lunch!

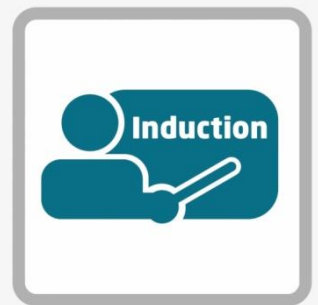
Proper Tool Use and Safety

The Monash Mens Shed has put together an updated tool use and safety cheat sheet for all shedders to abide by. Some shedders will know this information but please look through it in case things have been changed or updated. If you have any questions or concerns about the information in the following please contact Aden in the office.

Proper procedure for the use of the sheds tools are as follows.

Fundamental principles

1. If you use it – put it away afterwards
2. If you break it – own up, so we can get it repaired or replaced
3. Use PPE and give others the chance to put theirs on before starting up noisy tools
4. Clean up your work area after yourself – including the floor
5. Know your tool – ask how to use it, don't just have a go and hope for the best
6. You are not permitted to use the Shed major machinery without first having an induction into the machine you wish to use – even if you have a similar one at home or consider yourself competent
7. The only dumb question is the one that you didn't ask and should have
8. If you are asked for help – give it wherever you can, whenever you can
9. Don't make 'improvements' to machinery or Shed layout without the say so of the Shed Co-Ordinator and the relevant team leader
10. Don't rely on others to perform safety checks of power cords or put batteries on charge – that's your job



Types of tools

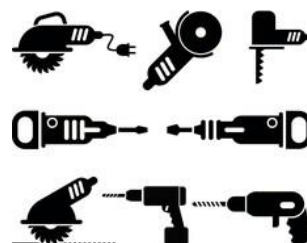
Monash Men's Shed has divided its tools into three broad categories



1. **Hand tools** – such as screwdrivers, hammers, chisels and hand saws. No specialised training is required to use these tools. Provided you already know how to use the tools and they are not misused, they are deemed to be reasonably safe.

Cont.

2. Power tools – these can be either cordless, battery-operated tools or corded, mains powered tools. If you are used to using any of these tools at home or work, you are welcome to use them without specific training. However, if you are unfamiliar with any of the versions held by the Shed, you are expected to ask for assistance from your fellow Shedder. This includes adjusting settings and changing blades, and not merely how to use a specific tool.



Handheld routers and electric planers can damage human tissue quickly, so it is important that these are used cautiously.



3. Machinery – You are not permitted to use any Shed major machinery without first having an induction in how to use it. This applies to everyone even if you have a similar one at home or consider yourself competent. Refer to the purple ring binder in the office for induction notes on how to use each piece of Shed machinery.

Things to remember about the Machinery:

Before you start up any machinery, ensure that the dust extraction ports to that machine are open and dust extraction ports to machines not in use are closed.

If you trigger the Saw Stop safety mechanism, you will be expected to replace it.

No machining of MDF, Treated Pine, painted material or material with nails or screws in.

No putting branch wood ‘in-the-round’ through the bandsaw without first applying stabilising blocks to both ends of the wood.

Every piece going through the thicknesser is to be checked first with the handheld metal detector.

Lathes present additional risks that require attention to be paid to clothing, hair, and jewellery.

Appropriate PPE is required to be worn when using Shed machinery.

Fellow shedders are to be given the opportunity to don PPE prior to starting up machinery.

Cleaning up is an integral part of using Shed machinery. If you can’t clean it – don’t use it. Leave it in a better state than you found it. Leave enough time to clean up before you go.

Machinery is only to be used during official Shed opening times of 09:30 to 1:30pm.

Upcoming Community Health Events

Wednesday, September 21 st	StrokeSafe	The Stroke Foundation
Wednesday, September 28 th	Heart Attack and Heart Disease	Epworth Richmond
Wednesday, October 12 th	CPR/Defibrillation	Bolton Clarke

Sale of Goods Event



Looking to purchase a gift for someone or something special for yourself? Then our shed Sale of Goods event is for you. At this event, new and used goods will be sold including items made by shed members. For some great deals come on down to Bogong Hall on Saturday the 27th of August at 10am to 1pm.

Testing Positive for COVID-19



If you are affected by covid-19, be aware that antivirals are available which can cost over \$1000. Fortunately if you are over 70 it is subsidized by the PBS and you only have to pay \$42.50 and even less if you have a health care card. You do need to get a referral from your GP with a phone consultation as they have your medical history and therefore will need to weigh up any side effects.

For more info click here <https://www.abc.net.au/news/health/2022-06-09/covid-antivirals-eligibility-paxlovid-molnupiravir-prescription/101130214>

A message from Haig Jason

Birthday Boys

Happy birthday to the following shedders this month!

George Beavan 20th

Jim Cooper 6th

Gladstone 13th

Don McPherson 15th

Paul Van Den Bergan 4th

Gerald Brown 14th

Tony Dear 16th

Geoff Hayley 12th

Eddie Pawlak 12th

Keith York 27th

Colin Chippindall 21st

Rick Gillard 18th John

Ray Hanson 28th

Phil Terry 21st



Food Costs



Lunches on our Health events have been free of charge or an optional gold coin donation. The current rapid rise in food costs has made it unsustainable for the shed to fully subsidise the meal. Commencing at our next Health Event a cost of \$2- will apply for those participating in the meal. Our regular Community Lunches remain unchanged at \$5-.

Interesting Repair Jobs!

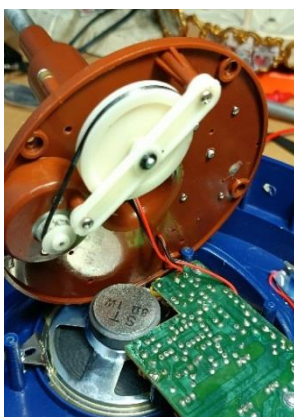
Hi fellow shedders. You may have forgotten so let me remind you that the shed is more than willing to assess and repair (where possible) electrical/electronic items you have that have a problem. Although modern equipment such as digital TV's are too difficult to attempt a repair without sophisticated equipment and access to manufacturer's information (very difficult to get hold of) there are many simpler (and usually older) items that can be repaired or at least looked at and an opinion, free of charge, given before being thrown out. If a repair does go ahead and is successful a charge of \$20 per hour going towards the shed plus parts is the current going rate.

You may be surprised at what has been repaired recently – it includes the following:

- Bench grinder
- Constant pressure water pump
- Electric Fan Heater
- Lit Mirror
- Electric Drill
- Band Saw
- Sound Bar
- Valve Radio
- Transistor radio



The most interesting repair done lately was of a toy Carousel. It came in as reportedly not working but in fact was partially working with music being played but the Carousel wasn't turning. Figuring out how to pull it apart was the first challenge. It's amazing how clever design engineers can be in hiding screws and how much use is made of plastic clips to hold things in place. It takes a lot of practice to know just how much pressure can be applied to release a clip without breaking it and aged plastic also doesn't help! In this particular case the key was the removal of the top token - pulling this off showed a locking nut that released the main carousel from the base.



Powering up the unit and it became obvious that no drive was getting to the gearbox which drove the Carousel around. The small electric motor was working and initially it looked like a very simple slipping rubber drive belt was the cause. No such luck and on closer inspection it turned out to be the first driven nylon gear was slipping on its drive shaft. These nylon gears are very common in all sorts of toys and electro mechanical equipment such as the old VCR's etc. They are usually just pressed on the drive shaft and unfortunately also have a bad habit of splitting with age and this is exactly what happened to this one. The nylon splits around the

hub and the gear stops being a tight fit and slips when any force is applied.

6 of 7

There was no way I was going to get a replacement so I turned to an old trick I have used in the past of roughening the shaft with some emery paper and applying a very thin layer of epoxy. Not just any old epoxy (nylon is very hard to glue) but I have had great success with JB Weld epoxy (available at Supercheap Auto.) This epoxy is by far the best glue I have ever used and I highly recommend it for repairs that will have force applied. It saved my 40 year old air compressor from going to the tip a while back. A smidgin of glue and it worked. With that and a new drive belt this unique toy is back in action and will no doubt bring a smile to faces both young and old.



So, if you have something useful or of interest or of sentimental value that is not working and you are not quite sure of whether to just send it to the tip bring it along. I am usually at the Shed on Wednesday mornings or just leave it with the co-ordinator (Aden) and we will have a look at it. On a final note – last year I ran a series of weekly meetings for interested members. COvid interrupted them and unfortunately this year has been a particularly busy time for me so they haven't yet recommenced. I do intend to start them again but with a slightly different slant. I'll be bringing in some very interesting equipment to talk about – stay tuned.....

Clive Allan.

Geoffs Geokes!

A young boy and an old man were sitting together on a sofa. The boy said to the old man, "Yeah, I didn't believe in reincarnation either, back when I was your age."

A passenger in a taxi wanted to ask a question, so he leaned forward and tapped the driver on the shoulder.

The driver instantly screamed, lost control of the taxi, narrowly missed a bus, mounted the footpath, scraped against a light pole and stopped abruptly just inches short of driving through a shop window.



For a moment there was silence, and then the driver said: "Mate, don't you ever do that again!"

The passenger apologised and then said: "I didn't think such a light tap could possibly frighten you that much!"

The driver sighed and said: "I guess I over-reacted. You see, today is my very first day of driving a taxi. Previously I spent twenty-five years driving a hearse!"

Email in your submissions to the newsletter to danielroper2522@gmail.com

it could be shed related or a photo of something you've made, something significant that has happened in your life or even a joke or fact you would like to share. Anything you like.

We would love to hear from you!

Thank you to our Partners and Supporters



Waverley City



HELPLINES

Emergency Services: 000



24-hour helpline
Free phone 1300 22 4636



Suicide Call Back Service: 1300 659 467

Men's Line: 1300 78 99 78 Veterans Line: 1800 011 046

Men's Referral Service for help to avoid domestic violence: 1300 766 491

Grief Line: 03 9935 7400 12-3pm 7 days Pain Management Line: 1300 340 357

Sane Australia: 1800 18 7263

Mind Australia Carer Helpline: 1300 554 660